

# robart DISC BRAKES INSTALLATION INSTRUCTIONS

## For Large & Small Robart Tuff Tread Wheels

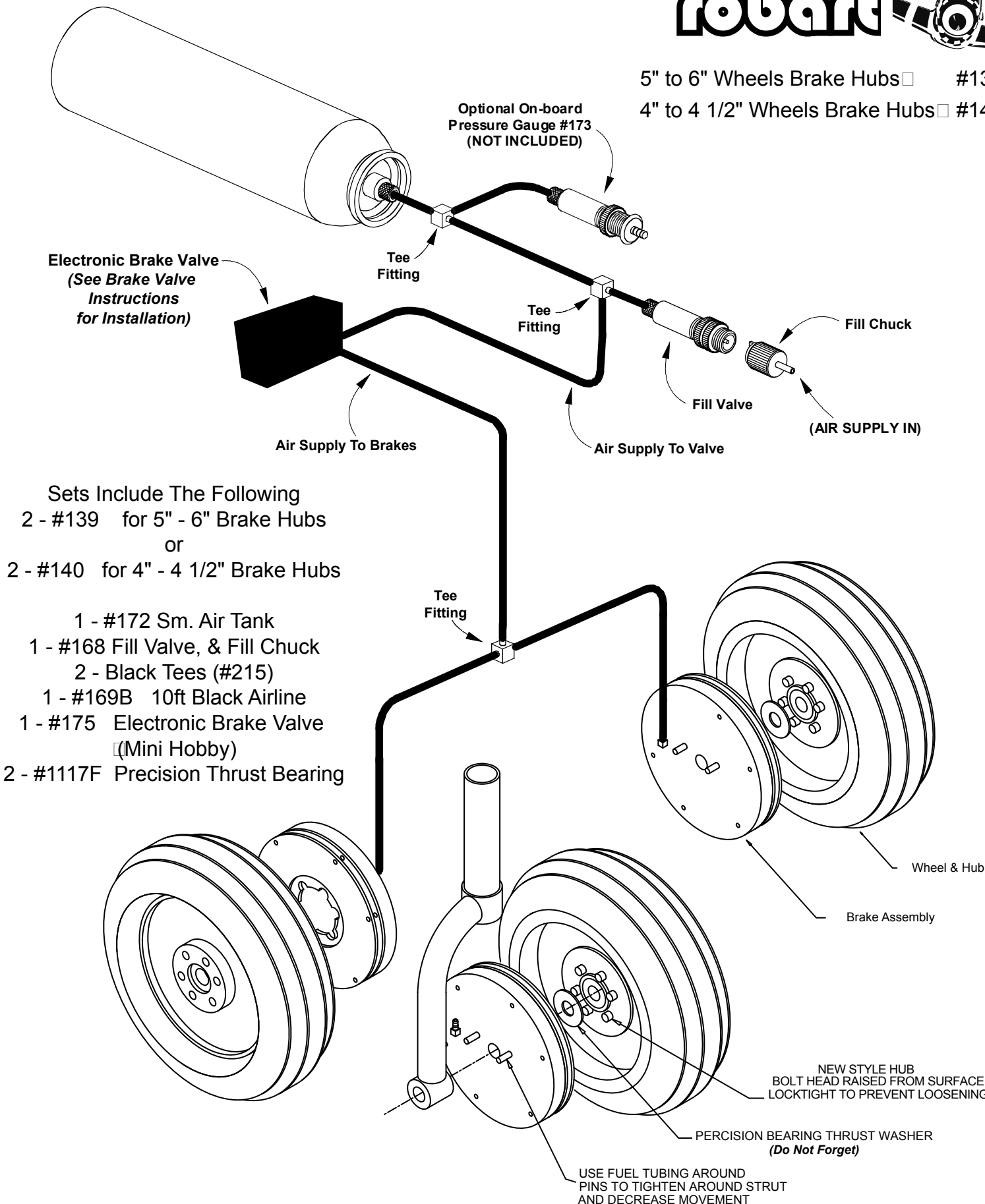
Reach For

**robart**



5" to 6" Wheels Brake Hubs  #139

4" to 4 1/2" Wheels Brake Hubs  #140



Electronic Brake Valve  
(See Brake Valve  
Instructions  
for Installation)

Optional On-board  
Pressure Gauge #173  
(NOT INCLUDED)

Tee Fitting

Tee Fitting

Fill Chuck

Fill Valve

(AIR SUPPLY IN)

Air Supply To Brakes

Air Supply To Valve

Sets Include The Following

2 - #139 for 5" - 6" Brake Hubs

or

2 - #140 for 4" - 4 1/2" Brake Hubs

1 - #172 Sm. Air Tank

1 - #168 Fill Valve, & Fill Chuck

2 - Black Tees (#215)

1 - #169B 10ft Black Airline

1 - #175 Electronic Brake Valve  
(Mini Hobby)

2 - #1117F Precision Thrust Bearing

Tee Fitting

Wheel & Hub

Brake Assembly

NEW STYLE HUB  
BOLT HEAD RAISED FROM SURFACE  
LOCKTIGHT TO PREVENT LOOSENING

PERCISION BEARING THRUST WASHER  
(Do Not Forget)

USE FUEL TUBING AROUND  
PINS TO TIGHTEN AROUND STRUT  
AND DECREASE MOVEMENT