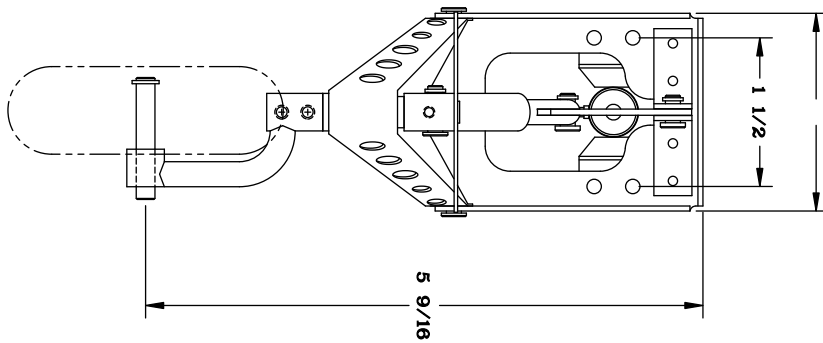
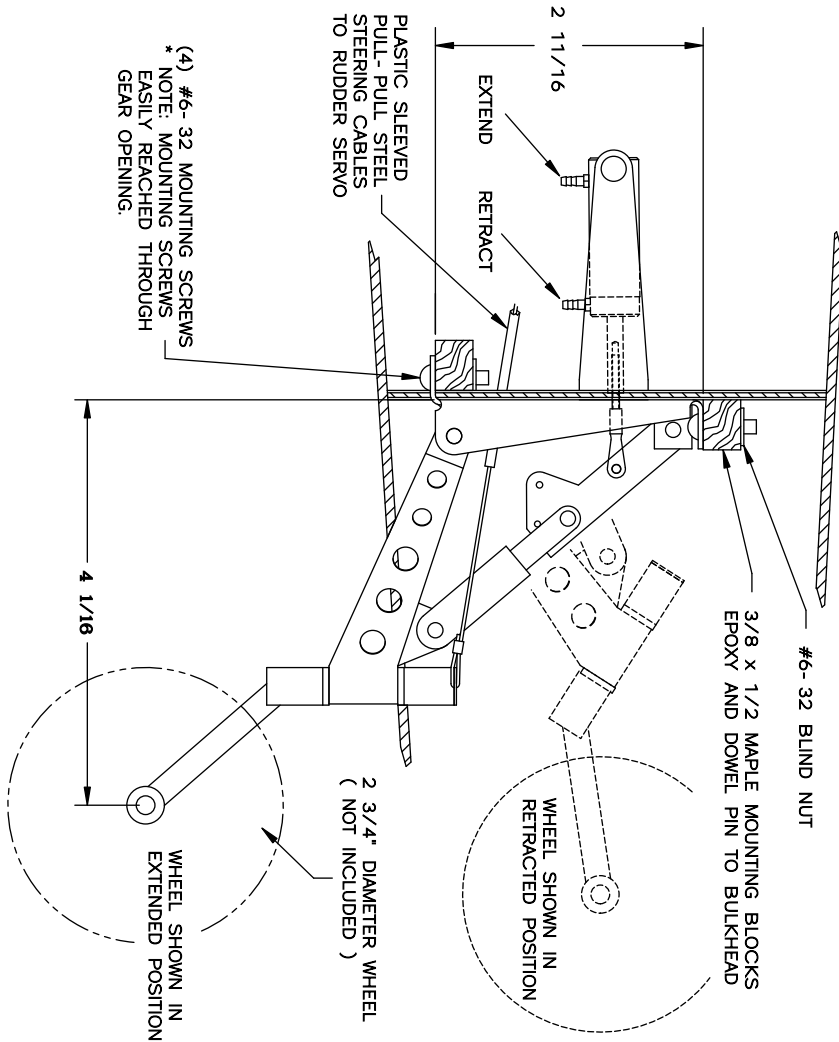


TYPICAL INSTALLATION WITH INTEGRAL CYLINDER



PRINT NOT TO SCALE



MFG. INC  
625 N. 12th ST.  
ST. CHARLES IL.

TITLE #160RWC TAIL WHEEL OPERATIONAL DETAILS

DRAWING No. 160- RWC

REV.

# #160 RETRACT TAIL WHEEL RH OFFSET WITH CYLINDER

THIS DRAWING ITS CONTENTS AND INFORMATION, ARE CONFIDENTIAL, AND THE PROPERTY OF ROBERT MFG. INC. IT MAY NOT BE USED, COPIED, AND / OR TRANSMITTED TO ANY PERSON, FIRM, OR CORPORATION WITHOUT THE PRIOR WRITTEN APPROVAL OF ROBERT MFG. INC.