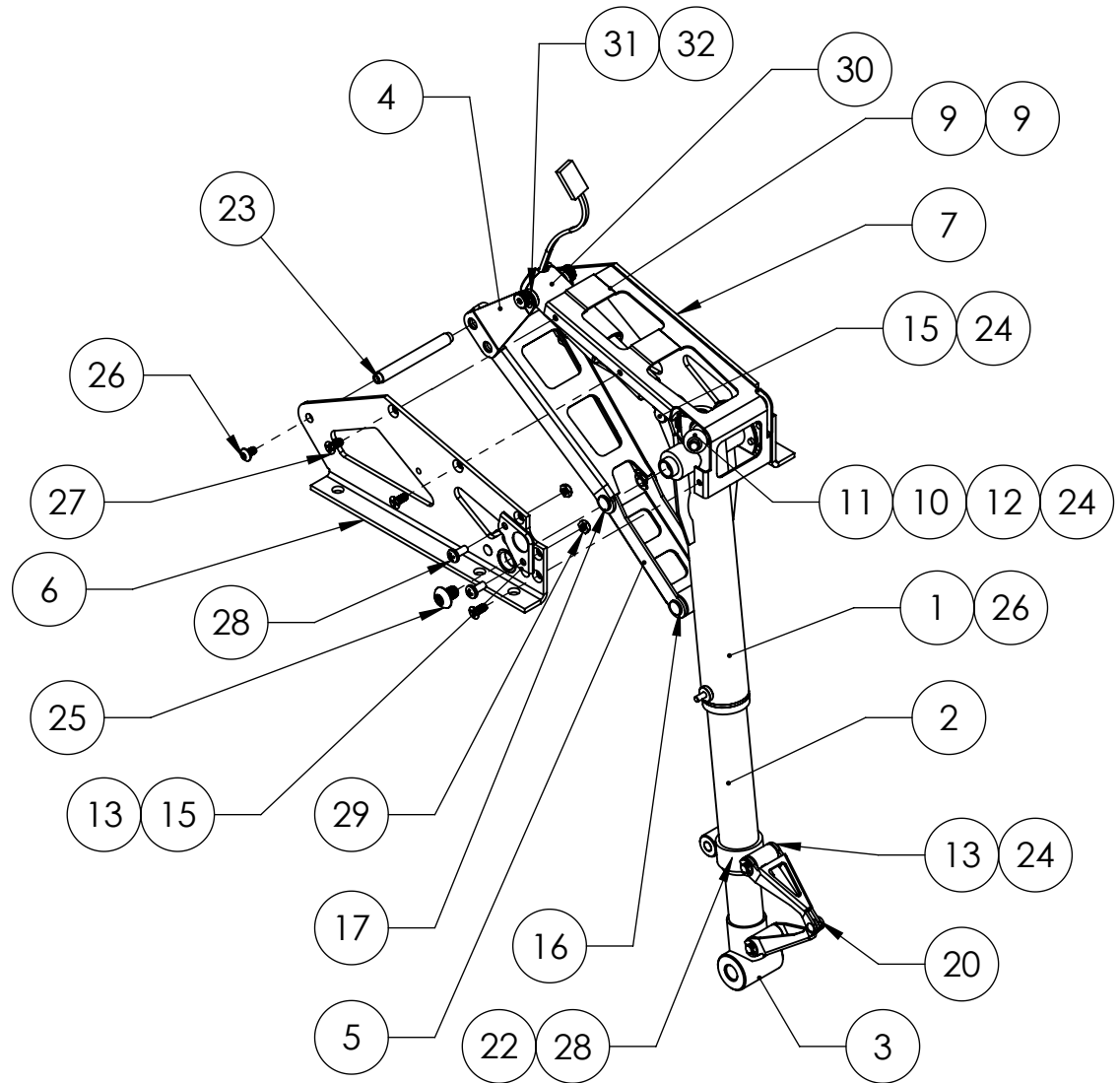


| SPARE PARTS LIST | | | |
|------------------|------|-------------------------|----------|
| QTY. | ITEM | DESCRIPTION | PART # |
| 1 | 1 | TRUNION ASSEMBLY | 150509A |
| 1 | 2 | ROTATION STRUT | 150506A |
| 1 | 3 | OLEO RAM WELDMENT | 151106A |
| 1 | 4 | LIFT YOKE ASSEMBLY | 162106A |
| 1 | 5 | 100 DEG LOWER LIFT LINK | 150031M |
| 1 | 6 | SIDE FRAME (RH) | 150507A |
| 1 | 7 | SIDE FRAME (LH) | 150508A |
| 1 | 8 | SPACER BRACKET-RH | 150050M |
| 1 | 9 | SPACER BRACKET-LH | 150051M |
| 1 | 10 | CAM FOLLOWER | 150106A |
| 1 | 11 | CAM BALL | 150032M |
| 3 | 12 | CLEVIS PIN | 150002M |
| 1 | 13 | CAM FRAME-RH | 150047M |
| 1 | 14 | CAM FRAME-LH | 150049M |
| 1 | 15 | CLEVIS PIN | 150018M |
| 1 | 16 | CLEVIS PIN | 150010M |
| 2 | 17 | CLEVIS PIN | 150033M |
| 1 | 18 | LIFT YOKE PIVOT PIN | 150004M |
| 1 | 19 | LATCH SPRING | 102008M |
| 1 | 20 | TORQUE LINK ASSEMBLY | 150107A |
| 1 | 21 | COMPRESSION SPRING | 151019P |
| 1 | 22 | TORQUE LINK MOUNT-RH | 150112A |
| 1 | 23 | TORQUE LINK MOUNT-LH | 150113A |
| 7 | 24 | E-CLIP | 1039F |
| 2 | 25 | #10-32 X 1/4 BHCS | 1021F |
| 2 | 26 | #4-40 x 3/16" BHSMS | 1022F |
| 8 | 27 | #4 X 1/4 PFHMS | 1026F |
| 2 | 28 | #4-40 X 1/4" BHMS | 1047F |
| 2 | 29 | #4-40 HEX NUT | 1035F |
| 1 | 30 | 150E SERIES ACTUATOR | 150E108A |
| 2 | 31 | ACTUATOR SPACER | 148E009M |
| 2 | 32 | #4-40 SHOULDER BOLT | 1201F |



AXLE BAG ASSEMBLY - #145142A

robart
www.robart.com
155 OSWALT AVE.
BATAVIA, IL. 60510
PH: 630-584-7616
FX: 630-584-3712

TITLE:
**100° HEAVY DUTY
ROTATING RETRACTS**

PROPRIETARY AND CONFIDENTIAL
THE INFORMATION CONTAINED IN THIS DRAWING IS THE SOLE
PROPERTY OF ROBART MANUFACTURING. ANY REPRODUCTION
IN PART OR AS A WHOLE WITHOUT THE WRITTEN PERMISSION OF
ROBART MANUFACTURING IS PROHIBITED.

| | NAME | DATE |
|---------|----------|---------|
| DRAWN | J. REHAK | 11DEC13 |
| CHECKED | | |

150ZF6FESP

REV -

906-444M