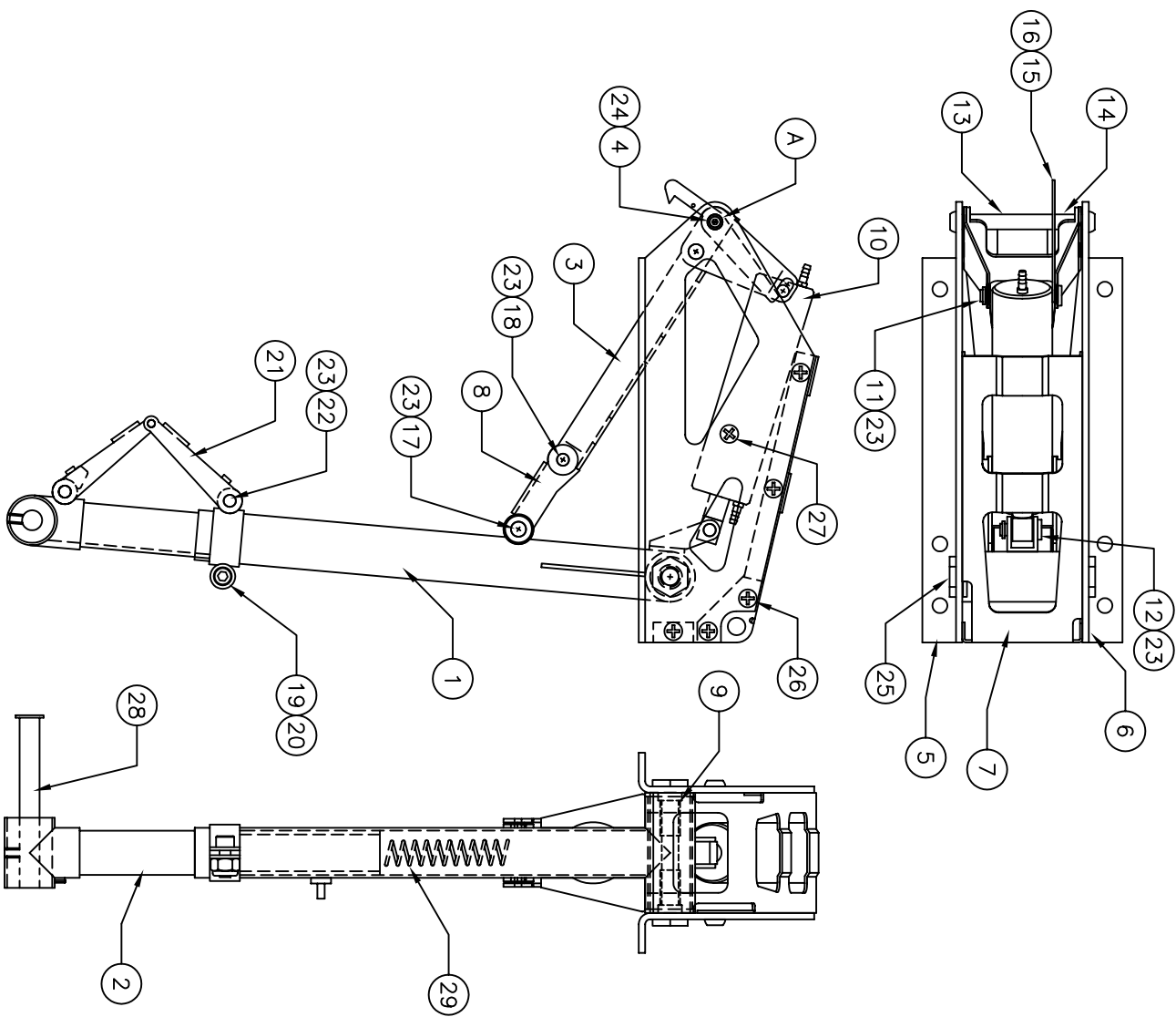


** THIS IS YOUR SPARE PARTS LIST. SAVE FOR FUTURE REFERENCE, ORDER BY PART NUMBER. CURRENT PRICES WILL BE QUOTED.**



SPARE PARTS LIST

QTY	ITEM	DESCRIPTION	ASS'Y/PART #
1	1	TRUNION ASSEMBLY	152-104A
1	2	OLEO RAM	151-106A
1	3	LIFT YOKE ASSEMBLY	150-105A
1	4	LIFT YOKE PIVOT PIN	150-004M
1	5	SIDE FRAME (RH)	150-037M
1	6	SIDE FRAME (LH)	150-036M
1	7	SPACER BRACKET	150-038M
1	8	LIFT LINK	150-029M
1	9	TRUNION SHAFT	151-007M
1	10	CYLINDER ASSEMBLY	150-108A
1	11	CYLINDER CLEVIS PIN	150-012M
1	12	ACTUATOR CLEVIS PIN	150-018M
1	13	LATCH SPACER TUBE LARGE	150-001M
1	14	LATCH SPACER TUBE SMALL	150-005M
1	15	LATCH PAWL	150-003M
1	16	LATCH SPRING	102-008M
1	17	LIFT LINK CLEVIS PIN	150-010M
2	18	LIFT YOKE CLEVIS PIN	150-033M
1	19	TORQUE LINK MOUNT RH	150-112A
1	20	TORQUE LINK MOUNT LH	150-113A
2	21	TORQUE LINK ASSEMBLY	150-107A
2	22	CLEVIS PIN (CAM PIN)	150-002M
7	23	RETAINING RING	1039F
2	24	#4-40 x 1/4 BHCS	1022F
2	25	HEX SHOULDER BOLT 1/4-28	151-008M
10	26	#4 X 1/4 PPHMS	1026F
1	27	#6 PPHSMS	1012F
1	28	AXLE BAG	145-142A
1	29	SPRING	151-019P
30			

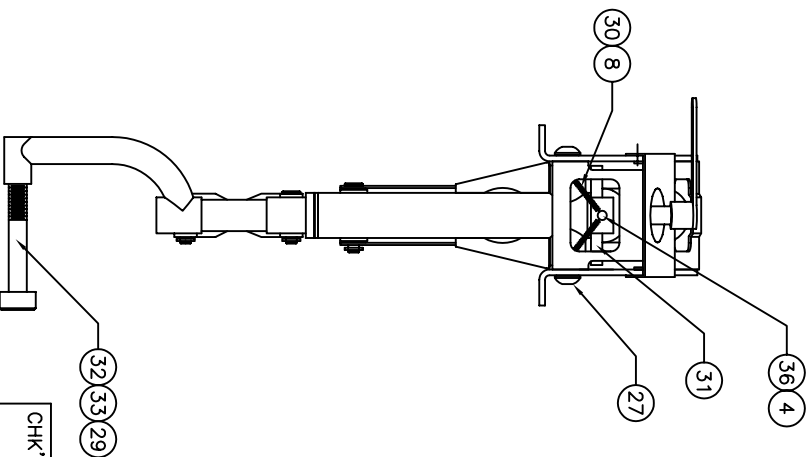
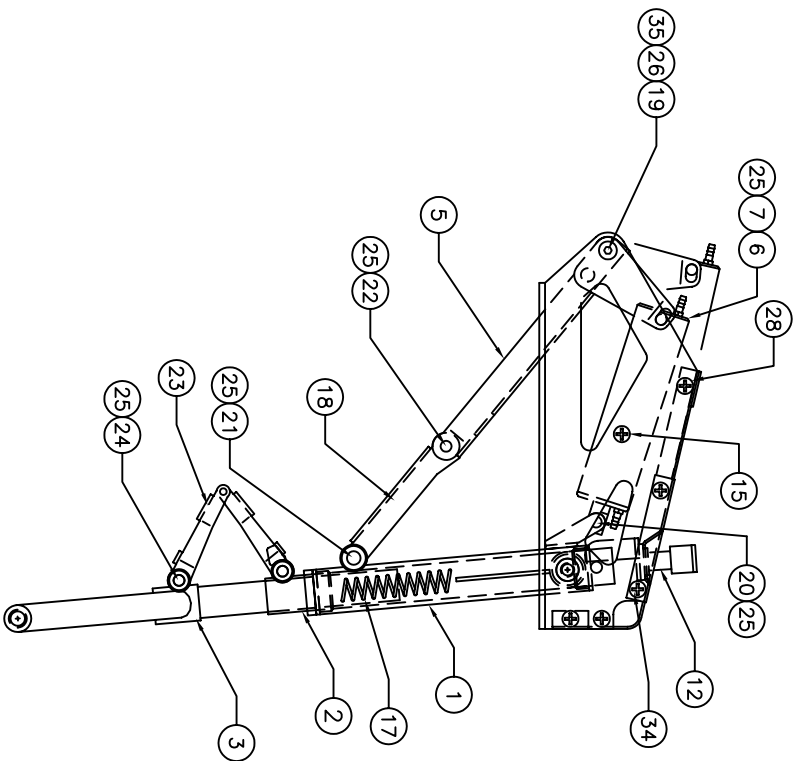
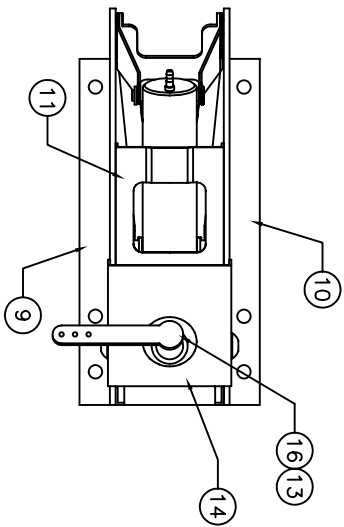
A NOTE THAT OLD STYLE PIVOT PINS DO NOT HAVE THE STEPPED ENDS AS THE NEW STYLE. TO CONVERT THE SIDE FRAMES TO ACCEPT THE NEW STYLE PIN THE PIN MOUNTING HOLES HAVE TO BE DRILLED OUT WITH A #24 DRILL (0.152)

CHK'D BY		MFG. INC.
DRAWN BY	J. REHAK	625 N. 12TH ST. ST. CHARLES, IL (630)584-7616
DATE	6-18-02	TITLE
MODEL No.	163	85° NON ROTATING LARGE SCALE RETRACTS

906-233M

FACTORY REPAIR FEE= \$25.00 PLUS PARTS

** THIS IS YOUR SPARE PARTS LIST. SAVE FOR FUTURE REFERENCE, ORDER BY PART NUMBER. CURRENT PRICES WILL BE QUOTED.**



** SPARE PARTS LIST **

QTY	ITEM	DESCRIPTION	ASSY/PART #
1	1	TRUNION ASSEMBLY	163-202A
1	2	ROTATING STRUT ASSEMBLY	163-203A
1	3	OLEO RAM ASSEMBLY	163-201A
1	4	#2-56 SHCS	1111F
1	5	LIFT YOKE ASSEMBLY	150-105A
1	6	CYLINDER ASSEMBLY	150-108A
1	7	CYLINDER PIVOT PIN	150-012M
1	8	SPRING - CUT 1/2	158-001P
1	9	SIDE FRAME (RH)	150-037M
1	10	SIDE FRAME (LH)	150-036M
1	11	SPACER BRACKET	150-038M
1	12	STEERING YOKE ASSEMBLY	158-106A
1	13	STEERING ARM ASSEMBLY	158-105A
1	14	STEERING BRACKET ASSEMBLY	158-104A
1	15	#4 PTHMS	1055F
1	16	SET SCREW	1060F
1	17	SPRING 6" LONG	150-019P
1	18	LIFT LINK	150-031M
2	19	LIFT YOKE PIVOT BUSHING	163-014M
1	20	ACTUATOR PIVOT PIN	150-018M
1	21	LIFT LINK PIN	150-010M
2	22	YOKE PIVOT PIN	150-033M
1	23	TORQUE LINK ASSEMBLY	150-107A
2	24	CLEVIS PIN	150-002M
7	25	RETAINING RING	1039F
2	26	#4-40 x 3/16 BHCS	1022F
2	27	#10-32 x 1/4 B.H.C.S.	1021F
6	28	#4 x 1/4 PTHMS	1026F
1	29	AXLE SCREW 1/4-20	1096F
2	30	#2-56 x 1/4 FHMS	1023F
1	31	ROTATING SHAFT STEERING PIN	158-006M
1	32	1/4" THIN WASHER	1105F
1	33	1/4-20 THIN JAM NUT	1106F
4	34	#4-40 x 1/4 PPHMS	1051F
2	35	#4 FLAT WASHER	1102F
1	36	1/8" SPACER TUBING	102-009P

CHK'D BY
DRAWN BY J. REHAK
DATE 6-14-02
MODEL No. 163



MFG. INC.
625 N. 12TH ST.
ST. CHARLES, IL
(630)584-7616

TITLE 101" B-25 NOSE GEAR
ZIROLI TRI-GEAR SET